



## **IN CONTROL 1.40 - shareware version**



**Introduction**

**How to use In Control**

**Credits**

**Omicron Systems Ltd**

**The Shareware Concept**

**Registering In Control**

**Legal Stuff**

## INTRODUCTION

In-Control is a Windows 3.1 application that gives you selective access to the individual functions of the Windows Control Panel. It is aimed at two types of user :

1 - System administrators who want to give their users access to some but not all of the Control Panel functions - either for convenience or for reasons of security - e.g. your users may want to change the Mouse and Desktop settings but you would rather they didn't meddle with the 386 enhanced settings. (this was why we originally developed it!).

2 - Very lazy power users - those of you who frequently (or infrequently) want to access individual control functions and find selecting an icon or an item from the Control Panel menu each time too much of a strain!

This is a fully functioning shareware version of In-Control - the only difference between this and the registered version is that occasionally a dialogue box will appear after you have used it reminding you (or your users) that this is an unregistered evaluation copy.

## **USING IN CONTROL**

**Installing IN CONTROL**

**Usage**

**Program Manager usage**

**Error Messages**

## **INSTALLING IN CONTROL**

If you are reading this you probably have already installed IN CONTROL successfully but if not :

The following files need to be placed in the same directory on your hard disk, preferably one that is on your path (you can use your Windows directory if you wish but this is not recommended - we would hate to see you losing IN CONTROL when you upgrade to Windows 4 for instance!) .

INCTRL.EXE - the main executable program.

INCTRL.HLP - this help file.

INCTRL.TXT - notes

That's it! Should you need to uninstall IN CONTROL just delete the above files - INCTRL does not make any changes to WIN.INI, nor does it place or create any other files on your system.

The INSTALL program supplied will accomplish the above onerous task for you and also set up a Program Manager group containing individual icons for each usage of IN CONTROL

## USAGE

IN CONTROL has just one parameter - Partial menu String

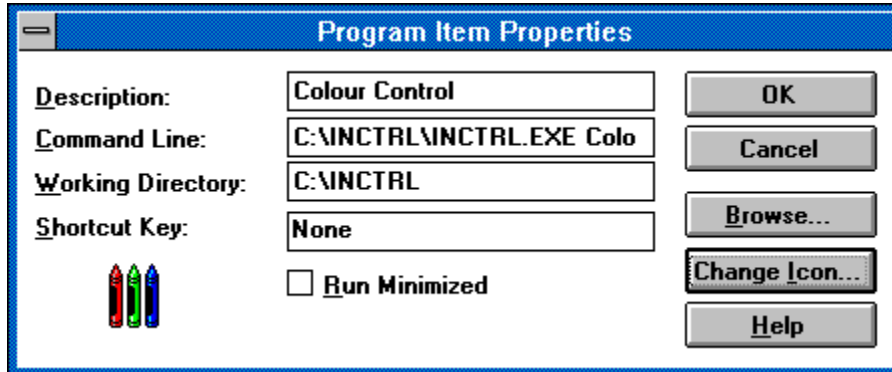
This should contain all or the leading part of the Settings menu option for the control panel function you wish to use. It can be typed in upper or lower case. If you invoke IN CONTROL with no parameters it will display this help file.

E.g. **INCTRL.EXE Desk** or **INCTRL.EXE DESKTOP** will activate the Desktop settings function.

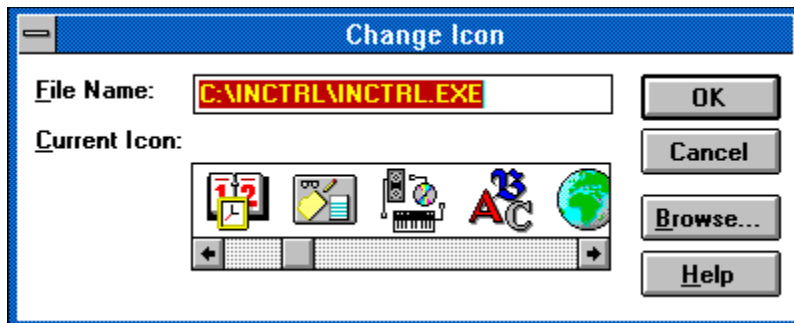
That's all - you should be able to set up IN CONTROL for use in this way from any Windows shell, menu system, batch language etc.

## PROGRAM MANAGER USAGE

To manually set-up a Program Manager item for IN CONTROL create a Program Object either using the File New Program Item from the Program Manager menu or by dragging the file INCTRL.EXE from File Manager into the required Program Manager group. Then modify the Program Item as in the example dialogue box below. This example assumes that you have installed IN CONTROL in the directory C:\INCTRL and that you want to access the Colours control panel function.



If you wish to change the icon for the In Control program item then select the Change Icon button from the Program Item Properties dialog box. You will see that IN CONTROL contains icons for all the standard Control Panel functions - either select one of the ones displayed or replace it with one of your own as described in the Windows reference manual.



## ERROR MESSAGES

If you invoke IN CONTROL while the Control Panel is active it will terminate with the message **Control Panel is already Running** - Just close Control Panel and start again.

If you specify a menu string incorrectly or one that is not available on your system , e.g. **INCTRL FooBar**, the message: **Could not find Settings Menu Item - FOOBAR** is displayed. Check that the menu item you specified is in the Control Panel settings menu and that you have spelt it correctly.

If you run **INCTRL** with no parameters and it cannot find the file INCTRL.HLP the following message is displayed: **Cannot open Help File**. Ensure that the file INCTRL.HLP is installed on your hard disk and is either in a directory on your DOS Path statement or is in the start-up directory specified in the PROGMAN (or whatever) program item.

If IN CONTROL cannot locate the Windows Control Panel program it will display the message: **Could not find file CONTROL.EXE** - Check that the file CONTROL.EXE has not been inadvertently moved, renamed or deleted from your Windows Directory. Check with your systems administrator or re-install Windows.

If the INCTRL.EXE file has been damaged in any way you will see the message: **CRC error on file INCTRL.EXE** - Contact Omicron Systems for advice and check your system for Virus activity.

## **CREDITS**

Helen - for asking if she could change her Mouse to left-handed use.

Morrie Wilson - for WilsonWindowWare's excellent Winbatch product that was used for prototyping.

Borland - for their superb C++ windows development system

Microsoft - for all the icons which we unashamedly copied from the various Control Panel DLLs.

JASC Inc. - for their fine PaintShop Pro program which was used to capture the images in this help file.

Eschalon Development Inc. - for the excellent EDI install program used in this package.

Kevin Dean - for some very useful Public Domain code



## **OMICRON SYSTEMS LTD**

We don't just write shareware!

Omicron Systems was the first specialised Windows shareware library in the UK (and probably the World!) and our experience and range of Windows Shareware and PD software are unequalled. If you would like a free copy of our acclaimed disk catalogue in Windows Help format, full of easy to find information about thousands of applications on hundreds of disks, please contact us:

Omicron Systems Ltd  
45 Blenheim Crescent  
Leigh-on-Sea  
Essex  
SS9 3DT  
England

Tel (+44) 0702 710391  
Fax (+44) 0702 471113  
E-Mail: Compuserve 100016.454  
INTERNET (CIX): mekers@compulink.co.uk

We also specialise in producing custom help-files for Windows - contact us for details.

## **THE SHAREWARE CONCEPT.**

"Shareware" is copyrighted software which is distributed by authors through bulletin boards, on-line services, disk vendors, and copies passed among friends. It is commercial software which you are allowed to use and evaluate before paying for it. This makes shareware the ultimate in money back guarantees.

Most money back guarantees work like this: You pay for the product and then have some period of time to try it and see whether or not you like it. If you don't like it or find that it doesn't do what you need, you return it (undamaged) and at some point - which might take months - you get your money back. Some software companies won't even let you try their product! In order to qualify for a refund, the diskette envelope must have an unbroken seal. With these "licensing" agreements, you only qualify for your money back if you haven't tried the product. How absurd!

Shareware is very different. With shareware you get to use it for a limited time, without spending a penny. You are able to use the software on your own system(s), in your own special work environment, with no sales people looking over your shoulder. If you decide not to continue using it, you throw it away and forget all about it. No paperwork, phone calls, or correspondence to waste your valuable time. If you do continue using it, then - and only then - do you pay for it.

Shareware is a distribution method, NOT a type of software. Shareware is produced by accomplished programmers, just like retail software. There is good and bad shareware, just as there is good and bad retail software. The primary difference between shareware and retail software is that with shareware you know if it's good or bad BEFORE you pay for it.

As a software user, you benefit because you get to use the software to determine whether it meets your needs before you pay for it, and authors benefit because they are able to get their products into your hands without the hundreds of thousands of dollars in expenses it takes to launch a traditional retail software product. There are many programs on the market today which would never have become available without the shareware marketing method.

The shareware system and the continued availability of quality shareware products depend on your willingness to register and pay for the shareware you use. It's the registration fees you pay which allow the authors to support and continue to develop our products.

Please show your support for shareware by registering those programs you actually use and by passing them on to others. Shareware is kept alive by YOUR support!

## **REGISTERING IN CONTROL**

IN CONTROL is the first of what is hoped to be a range of easy to use Windows Utilities aimed at System Administrators and Power Users who want additional control and flexibility in their use of Windows. Development of these will in part depend on the success or otherwise of IN CONTROL. If you register In CONTROL you will get a disk containing the latest version without the registration reminder dialog box. You will also be entitled to free support either by phone or via Compuserve e-mail. All prices are detailed on the Order form, to register just:

### **Print out an order form.**

**Order Form.** - after you have displayed the order form you can print it using the File menu-option "Print Topic".

### **Post it to:**

Omicron Systems Ltd,  
45, Blenheim Crescent,  
Leigh-on-Sea,  
Essex,  
SS9 3DT

(or just send us a letter - as long as all the information on the order form is there)

### **Or Order by Telephone:**

We can take your credit card order by phone on +44 (0)702 - 710391 (24 hours)

### **Fax us your order form:**

We can take your order by FAX on +44 (0)702 471113

### **E-Mail:**

Or you can send us an E-Mail credit card order:

INTERNET:                mekers@compulink.co.uk  
COMPUSERVE:        100016.454@compuserve.com

If you place a Credit Card order on our 24hr answer phone service please remember to leave your telephone number, name, address, card number and expiry date, as well as details of the licence you require. Please speak slowly and clearly and spell any unusual words. Please write clearly in block capitals if you are ordering by post.

In all cases please ensure we have a telephone number where you may be reached during office hours to enable us to resolve any queries quickly.

We normally expect to despatch an order within two working days of receipt but occasionally circumstances may increase this period. Please allow 10 days for delivery.

### **Official Orders.**

We can accept official orders from Government departments, Educational establishments and major Corporations by prior arrangement - minimum order amount = £25

Export orders welcome - please pay by Credit Card or Sterling Eurocheque.

**IN CONTROL Order Form**

Please send me the following :

\_\_\_ Single User Licences @ £5.00 each \_\_\_\_\_  
\_\_\_ 10 User Site Licences @ £30.00 each \_\_\_\_\_  
\_\_\_ 50 User Site Licences @ £100.00 each \_\_\_\_\_  
\_\_\_ Unlimited Corporate Licence @ £200 \_\_\_\_\_  
plus postage (if outside UK & CI) of £2.00 \_\_\_\_\_  
Sub Total \_\_\_\_\_  
plus VAT @ 17.5% for UK & EEC customers \_\_\_\_\_  
Total \_\_\_\_\_

I enclose a cheque \_\_

Please debit my Access/Mastercard/Visa/Eurocard \_\_

Card. No. \_\_\_\_\_ Expiry date \_\_\_\_\_

Deliver To:

Name \_\_\_\_\_  
Address \_\_\_\_\_  
\_\_\_\_\_  
\_\_\_\_\_

Post Code \_\_\_\_\_ Day time Tel. No. \_\_\_\_\_

Signed \_\_\_\_\_

Card Holders Name & Address if different to above:

Name \_\_\_\_\_  
Address \_\_\_\_\_  
\_\_\_\_\_  
\_\_\_\_\_

I obtained my shareware copy of IN CONTROL from:

\_\_\_\_\_

Post this completed order to;  
Omicron Systems Ltd, 45, Blenheim Crescent, Leigh-on-Sea, Essex, SS9 3DT England  
or place your credit card order by phone: +44 (0)702 710391 (24 hr's)  
or FAX: +44 (0)702 471113

## **LEGAL STUFF.**

This software is copyright Omicron Systems Ltd 1992 - it is not and has never been in the Public Domain. You may freely copy and distribute the shareware version of In Control subject to the following conditions:

The In Control package - including all related program files and documentation files - MAY NOT be modified in any way and must be distributed as a complete package, without exception. The INCTRL.TXT text file contains a list of all files that are part of the In Control package.

Shareware disk vendors who make a modest charge for distribution may only distribute In Control after contacting Omicron systems Ltd in writing for permission unless they are approved ASP(Association of Shareware Vendors).

You may upload the In Control package to Bulletin Board Services in the form of a compressed archive file (eg PKZIP format) providing ALL the files listed in INCTRL.TXT are included in the archive. Please name the archive in the form INCTRL13.ZIP to reflect the version number.

THIS PRODUCT IS PROVIDED "AS IS" WITHOUT REPRESENTATION OR WARRANTY OF ANY KIND, EITHER EXPRESS OR IMPLIED, INCLUDING WITHOUT LIMITATION, ANY REPRESENTATIONS OR ENDORSEMENTS REGARDING THE USE OF, THE RESULTS OF, OR PERFORMANCE OF THE PRODUCT, ITS APPROPRIATENESS, ACCURACY, RELIABILITY, OR CORRECTNESS. THE ENTIRE RISK AS TO THE USE OF THIS PROGRAM IS ASSUMED BY THE USER. IN NO EVENT WILL OMICRON SYSTEMS LTD, . OR THEIR EMPLOYEES BE LIABLE FOR ANY DAMAGES, DIRECT, INDIRECT, INCIDENTAL OR CONSEQUENTIAL, RESULTING FROM ANY DEFECT IN THE PROGRAM, EVEN IF OMICRON SYSTEMS LTD HAVE BEEN ADVISED OF THE POSSIBILITY OF SUCH DAMAGES. THIS DISCLAIMER SHALL SUPERSEDE ANY VERBAL OR WRITTEN STATEMENT TO THE CONTRARY. IF YOU DO NOT ACCEPT THESE TERMS YOU MUST CEASE AND DESIST USING THIS PRODUCT.

